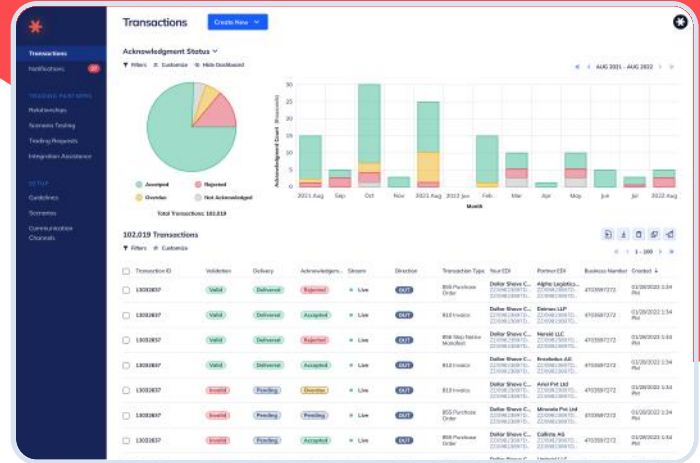


Onboard and Go Live with New EDI Trading Partners in Days

Orderful is EDI Done Right. Logistic providers, retailers, manufacturers and technology companies rely on Orderful's EDI platform to sell, maintain, and move physical goods.



Simplified EDI Integration

Orderful digitizes EDI requirements for all your partners. Resulting in a consolidated view of the exact data required across all of your partners, allowing you to build a single API integration per transaction type.



Streamlined Testing and Validation

Test and validate integration's immediate against your partners actual digitized requirements. Orderful automatically converts JSON to EDI that matches your partner's exact requirements. No more days and weeks of emailing back and forth.



Immediate Error Resolutions

View transactions in real-time and use the point and click business rules engine to fix and resubmit them instantly. No more submitting support tickets or waiting for a developer to fix transaction errors.



Real-Time Transaction Visibility

Orderful validates every transaction against your partners' requirements before it is sent and communicates the status to you and your trading partners immediately. No more blackbox of uncertainty.



Future Proof Your Infrastructure

Meet all of your customers needs without building and customizing infrastructure. Orderful's Modern EDI platform simplifies integrations, manages connectivity (HTTP, AS2, VAN, SFTP), transforms data to EDI, and pro-actively validates and corrects errors in real-time.



Leverage the Power of the Network

Start trading with pre-connected trading partners immediately. As customers onboard their supply chains, their trading partners along with their EDI requirements are published into our network and can be accessed and used by everyone immediately. As the network grows everyone wins.

“

Orderful's platform has allowed us to onboard over 150 shippers in less than 12 months and we can now onboard new carriers in days. Orderful consolidated the requirements of those 150 shippers into 4 integration points; other solutions would have required us to build and maintain 150 custom integrations with hundreds of EDI maps.”



Kyle Jepson,
SVP of Product at Emerge

